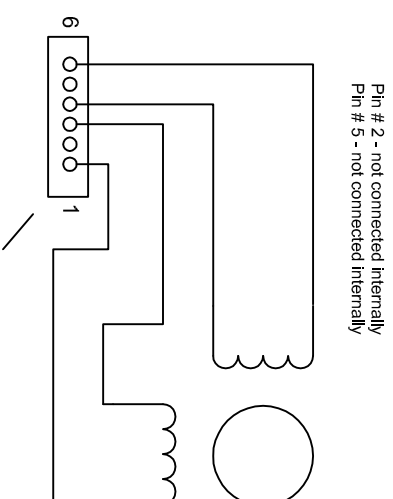
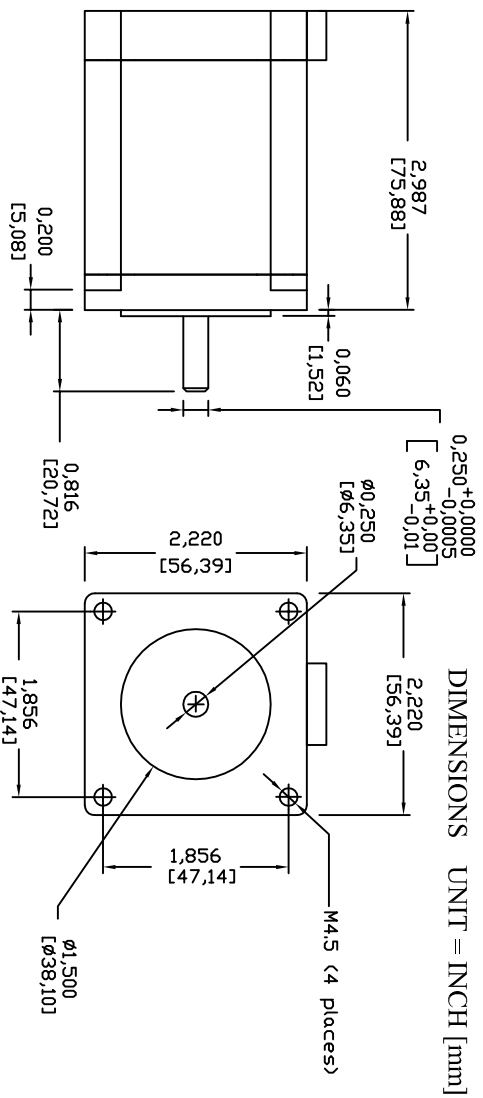




SPECIFICATIONS		
Step Angle	deg	1.8
Voltage	V DC	2.5
Current / phase	A / phase	3.5
Resistance / phase	ohm / phase	0.7
Inductance / phase	mH / phase	2.4
Holding Torque	oz-in	224
	N-cm	158
Detent Torque	oz-in	7.1
	N-cm	5.0
Rotor Inertia	oz-in <sup>2</sup>	2.4
	g-cm <sup>2</sup>	440
Weight	lbs	2.4
	kg	1.1

Bipolar driver required.  
 Keep motor case temperature below 100°C.  
 Allow sufficient time to accelerate the load.  
 Do not allow other power lines to run along step motor lead wires.  
 Do not use holding torque of motor as fail safe brake.  
 Properly align the motor with load.  
 Do not disassemble the motor.



motor-side connector:  
 JST MFG. CO. p/n: S6B-XH4A  
 Digi-Key p/n: 455-2236-ND

Rectangular housing with 6 crimp contacts is supplied with motor ( crimping tool required)  
 Housing - JST MFG. CO. p/n: XHP-6 Digi-Key p/n: 455-2218-ND  
 Contacts - JST MFG. CO. p/n: SXH-001T-P0.6 Digi-Key p/n: 455-1135-2-ND  
 Does not include cable.

Manufactured by: Minbea Motor Manufacturing Corporation  
 The names of companies or their products specified in this data sheet are the trade names and/or trademarks of such respective companies.

We have used our best effort in preparing this document. We make no representations or warranties with respect to the accuracy or completeness of the contents of this document and specifically disclaim any implied warranties of fitness for a particular purpose. We shall not be liable for any loss of profit or any other commercial damages.

REV	REV NDT	DATE
1		

		<b>TITLE</b> 2-PHASE STEP MOTOR	
<a href="http://www.interinar.com">http://www.interinar.com</a> <a href="mailto:support@interinar.com">support@interinar.com</a>		<b>DWG#</b> 23KM-K723-23V	
<b>DWG</b> M.W.	<b>SCALE</b> not to scale	<b>FILE NAME</b> 23KM-K723-23V.dwg	<b>SHEET</b> 1
<b>CAT</b> 78		<b>DATE</b> 01-23-2011	<b>DF</b> 1